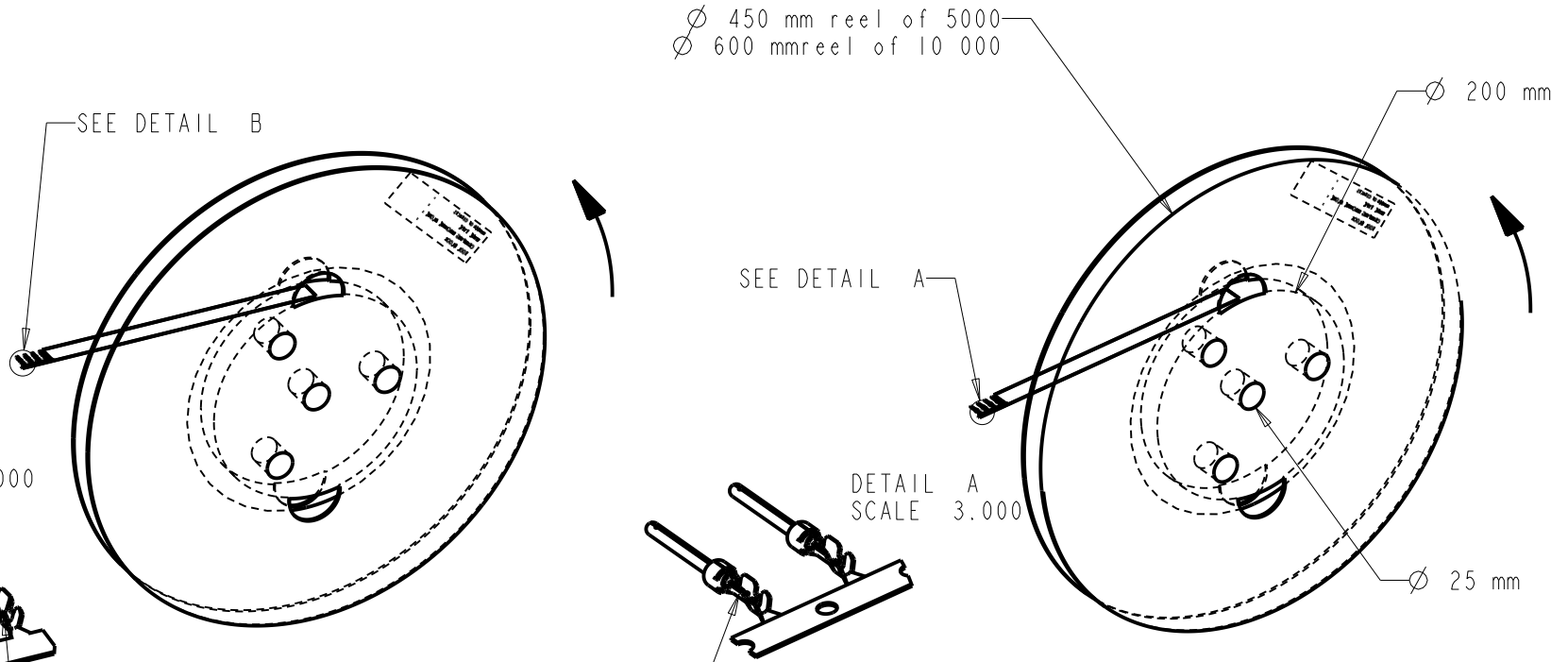


REFERENCE FOR REEL ACCORDING TO FEEDING DIRECTION

GAUGE	REEL OF 5000 FEMALE CTS		REEL OF 10 000 FEMALE CTS		GAUGE	REEL OF 5000 PIN CONTACTS		REEL OF 10 000 PIN CTS	
# 24-28	86566510064	86566510064LF	-		# 24-28	86564510064	86564510064LF	-	
# 20-24	86566520064	86566520064LF	86566530064	86566530064LF	# 20-24	86564520064	86564520064LF	86564530064	86564530064LF



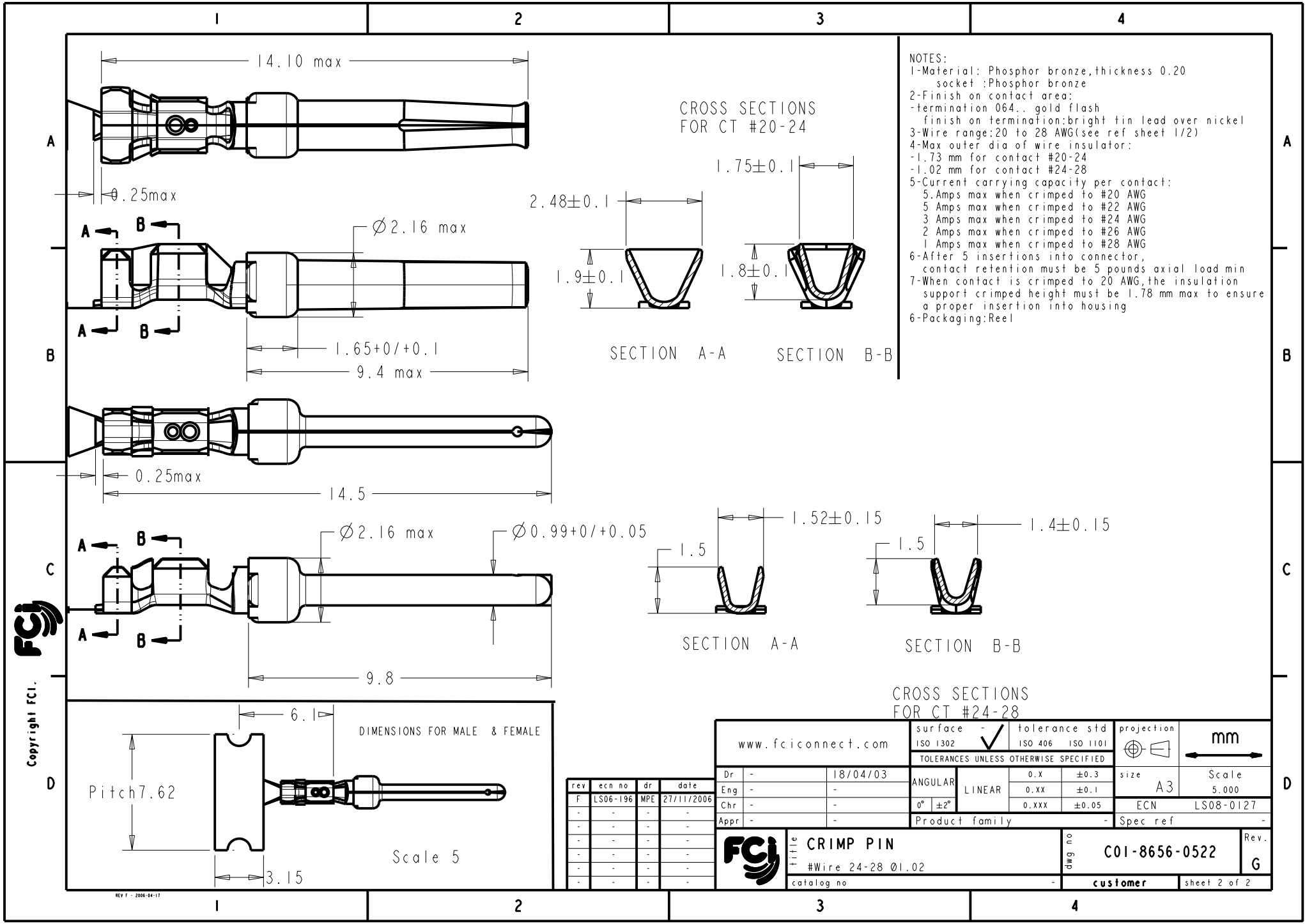
Copyright FCi

NOTE: ROHS INFORMATIONS
 The LF products meet European union directives and other country regulations as described in GS-22-008
 Terminations plating spec: 2µm Nickel min + 2µm Sn min
 Packaging spec: see GS-14-920

rev	ecn no	dr	date
F	LS06-196	MPE	27/11/2006
G	LS08-0127	MPE	2008/05/13
-	-	-	-
-	-	-	-
-	-	-	-

www.fciconnect.com		surface -	tolerance std	projection	mm
		ISO 1302	ISO 406 ISO 1101		
		TOLERANCES UNLESS OTHERWISE SPECIFIED		size A3	Scale 1.000
Dr	-	18/04/03	ANGULAR	0.X ±0.3	ECN LS08-0127
Eng	-	-	LINEAR	0.XX ±0.1	
Chr	-	-	0° ±2°	0.XXX ±0.05	
Appr	-	-	Product family	-	Spec ref -
	CRIMP PIN		dwg no	C01-8656-0522	
	#Wire 24-28 Ø1.02		customer	Rev. G	
	catalog no	-	sheet 1 of 2		

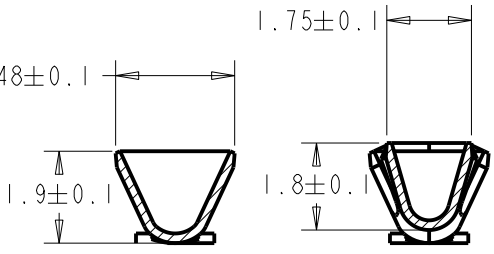
REV F - 2006-04-17



NOTES:

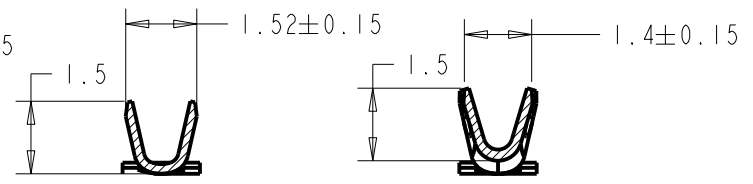
- 1-Material: Phosphor bronze, thickness 0.20
socket :Phosphor bronze
- 2-Finish on contact area:
-termination 064.. gold flash
finish on termination:bright tin lead over nickel
- 3-Wire range:20 to 28 AWG(see ref sheet 1/2)
- 4-Max outer dia of wire insulator:
-1.73 mm for contact #20-24
-1.02 mm for contact #24-28
- 5-Current carrying capacity per contact:
5.Amps max when crimped to #20 AWG
5 Amps max when crimped to #22 AWG
3 Amps max when crimped to #24 AWG
2 Amps max when crimped to #26 AWG
1 Amps max when crimped to #28 AWG
- 6-After 5 insertions into connector,
contact retention must be 5 pounds axial load min
- 7-When contact is crimped to 20 AWG, the insulation
support crimped height must be 1.78 mm max to ensure
a proper insertion into housing
- 6-Packaging:Reel

CROSS SECTIONS FOR CT #20-24



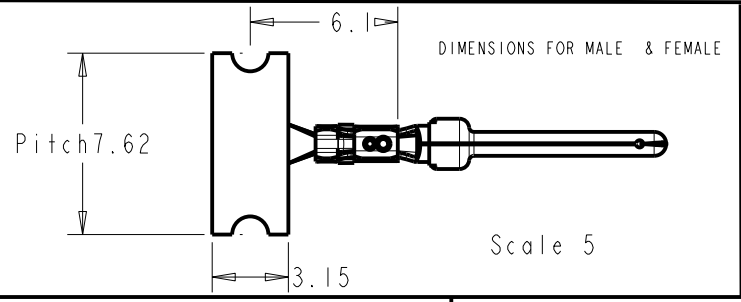
SECTION A-A SECTION B-B

CROSS SECTIONS FOR CT #24-28



SECTION A-A SECTION B-B

DIMENSIONS FOR MALE & FEMALE



rev	ecn no	dr	date
F	LS06-196	MPE	27/11/2006
-	-	-	-
-	-	-	-
-	-	-	-
-	-	-	-
-	-	-	-

www.fciconnect.com		surface - ✓	tolerance std	projection	mm
		ISO 1302	ISO 406 ISO 1101		
TOLERANCES UNLESS OTHERWISE SPECIFIED					
Dr	-	18/04/03	ANGULAR	0.X ±0.3	size A3
Eng	-	-	LINEAR	0.XX ±0.1	Scale 5.000
Chr	-	-	0° ±2°	0.XXX ±0.05	ECN LS08-0127
Appr	-	-	Product family	-	Spec ref -
	TITLE CRIMP PIN				Rev. G
	#Wire 24-28 Ø1.02				
	catalog no		customer	C01-8656-0522	sheet 2 of 2

Copyright FCI

REV F - 2006-04-17